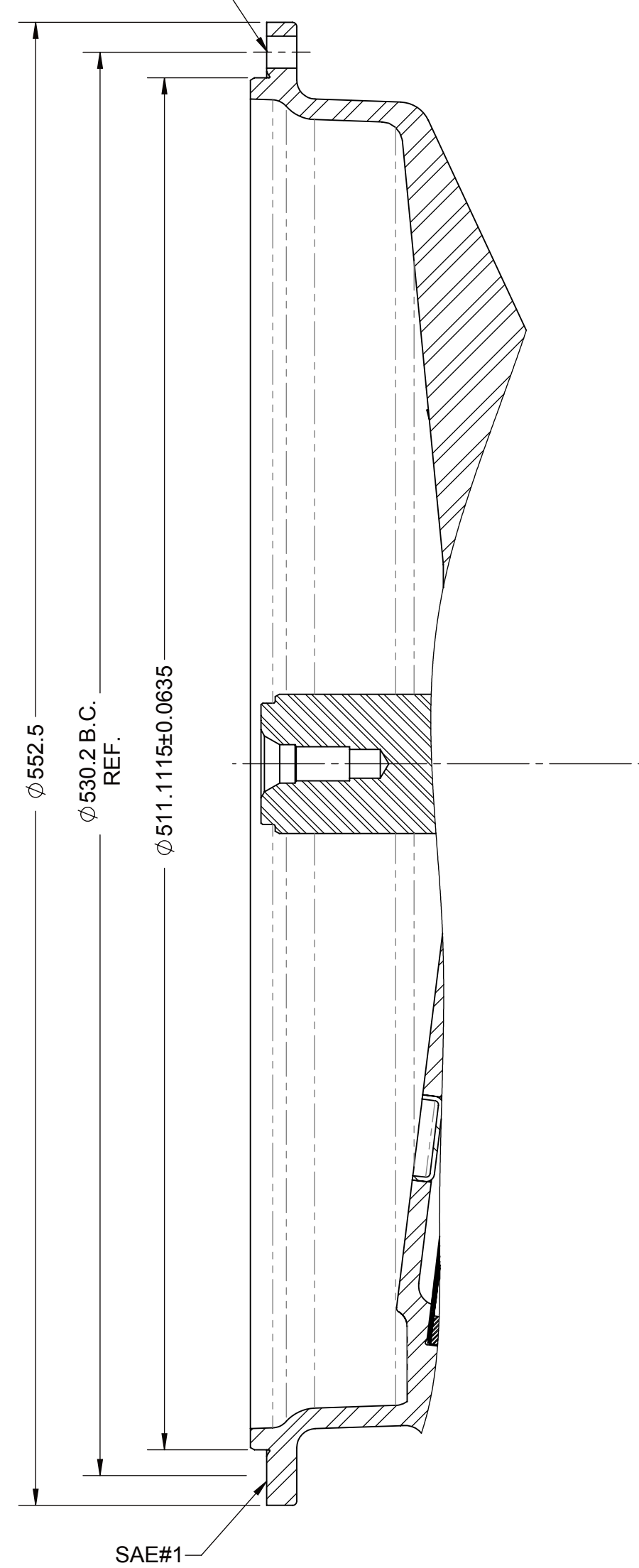
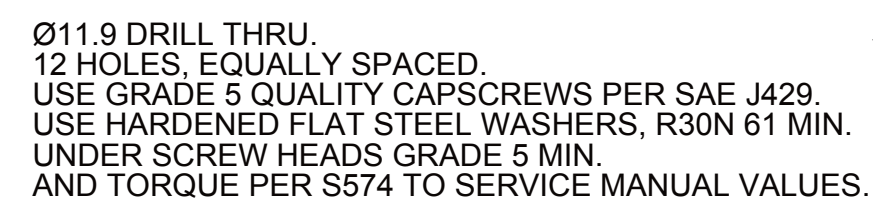


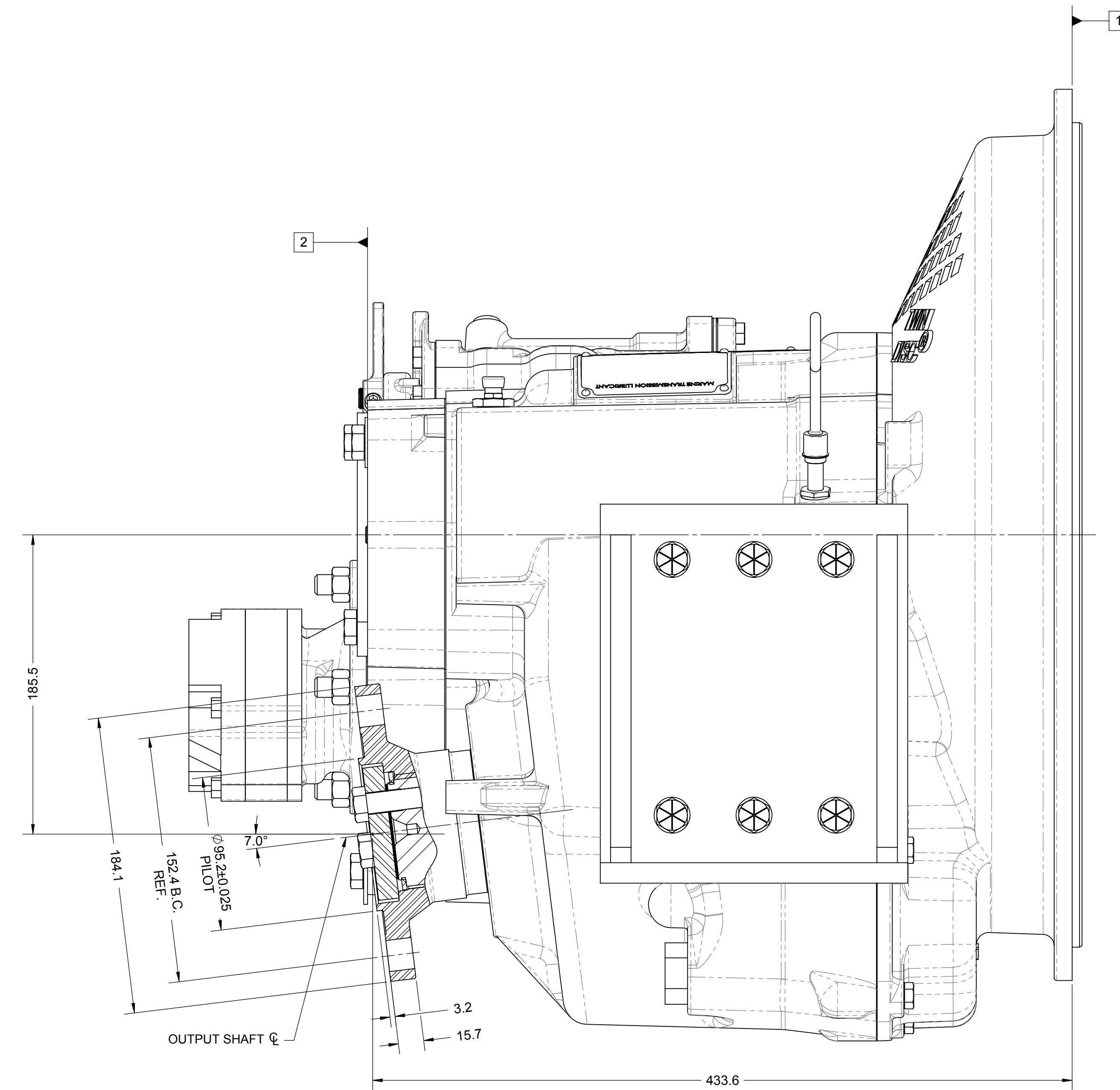
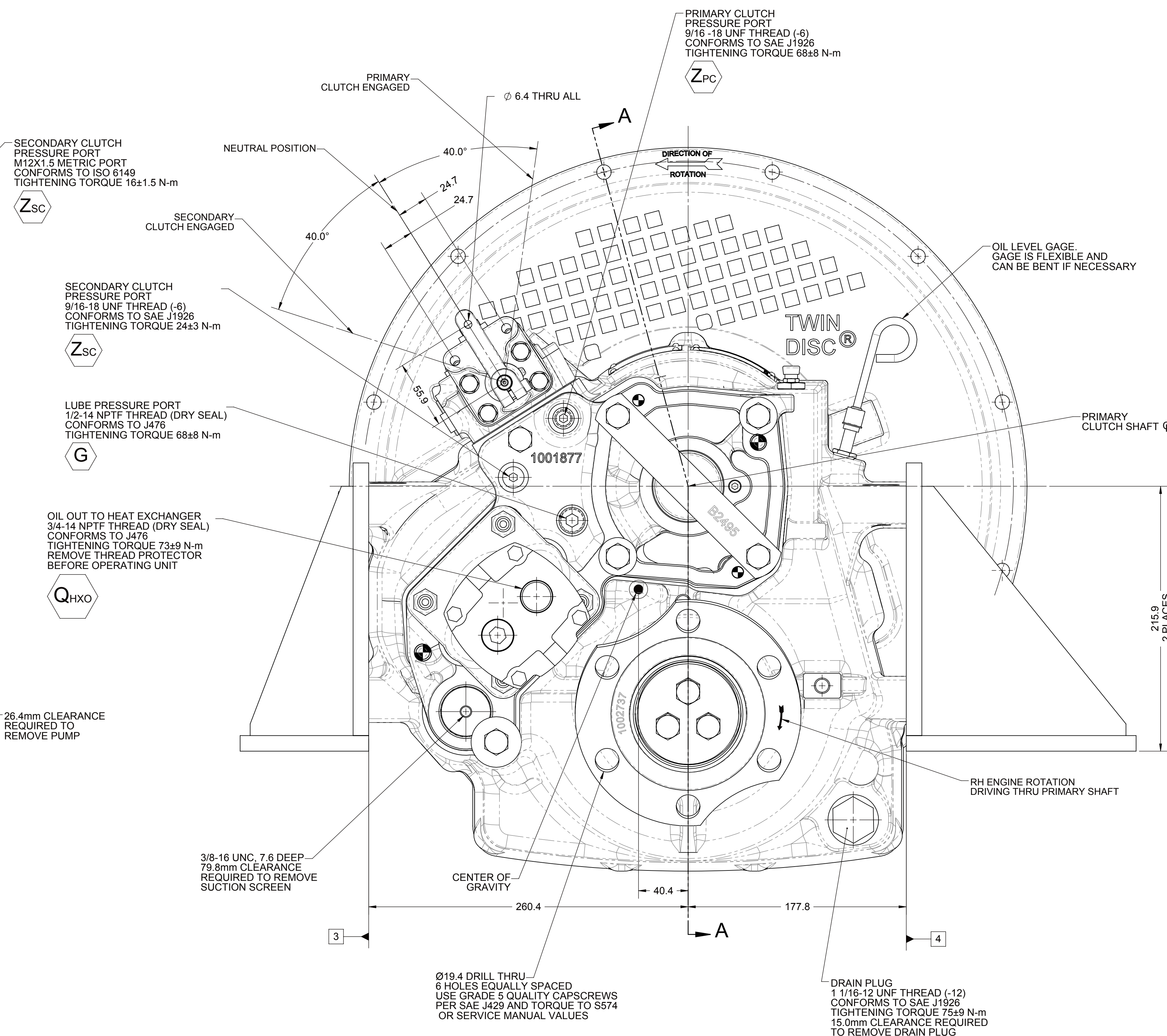
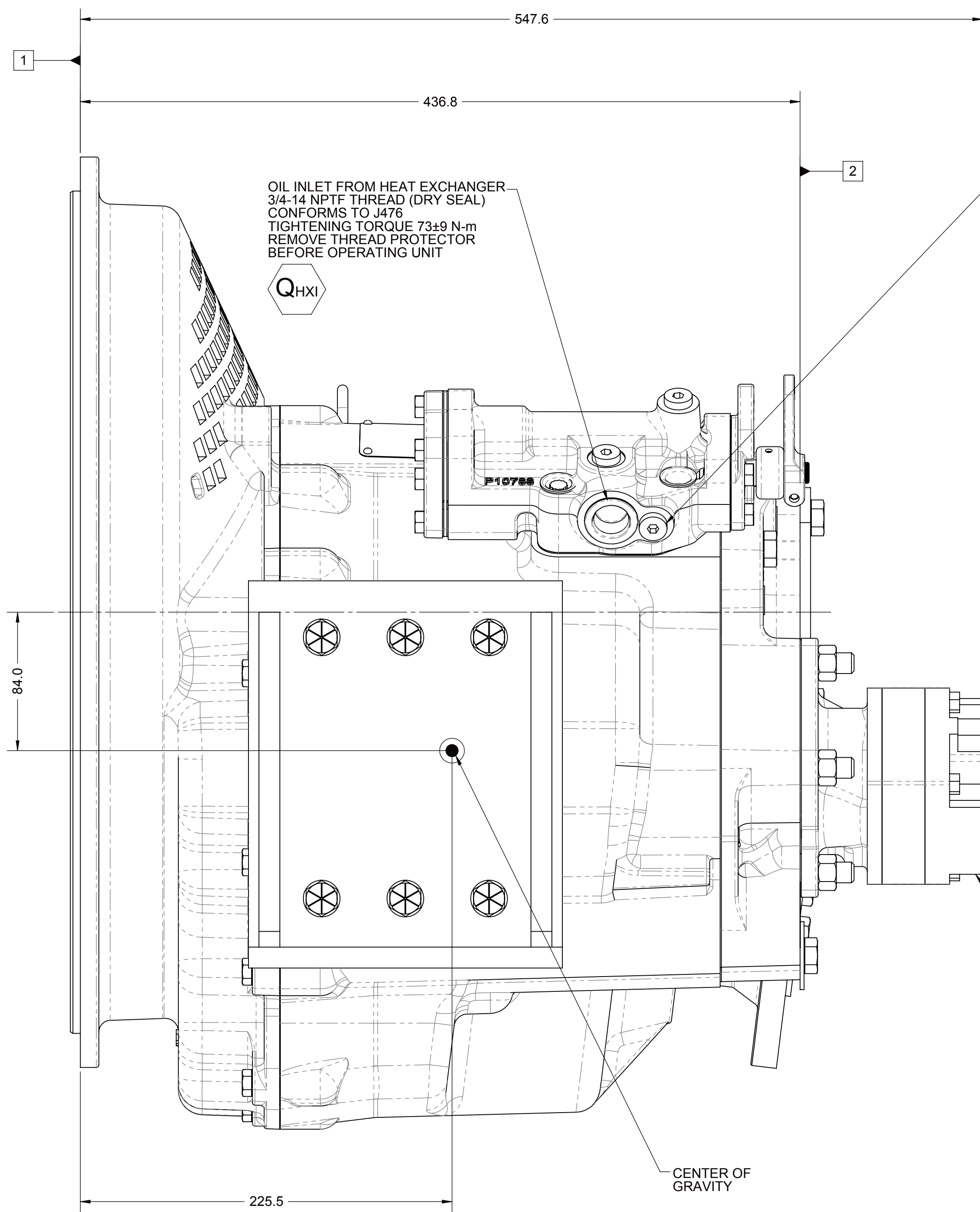
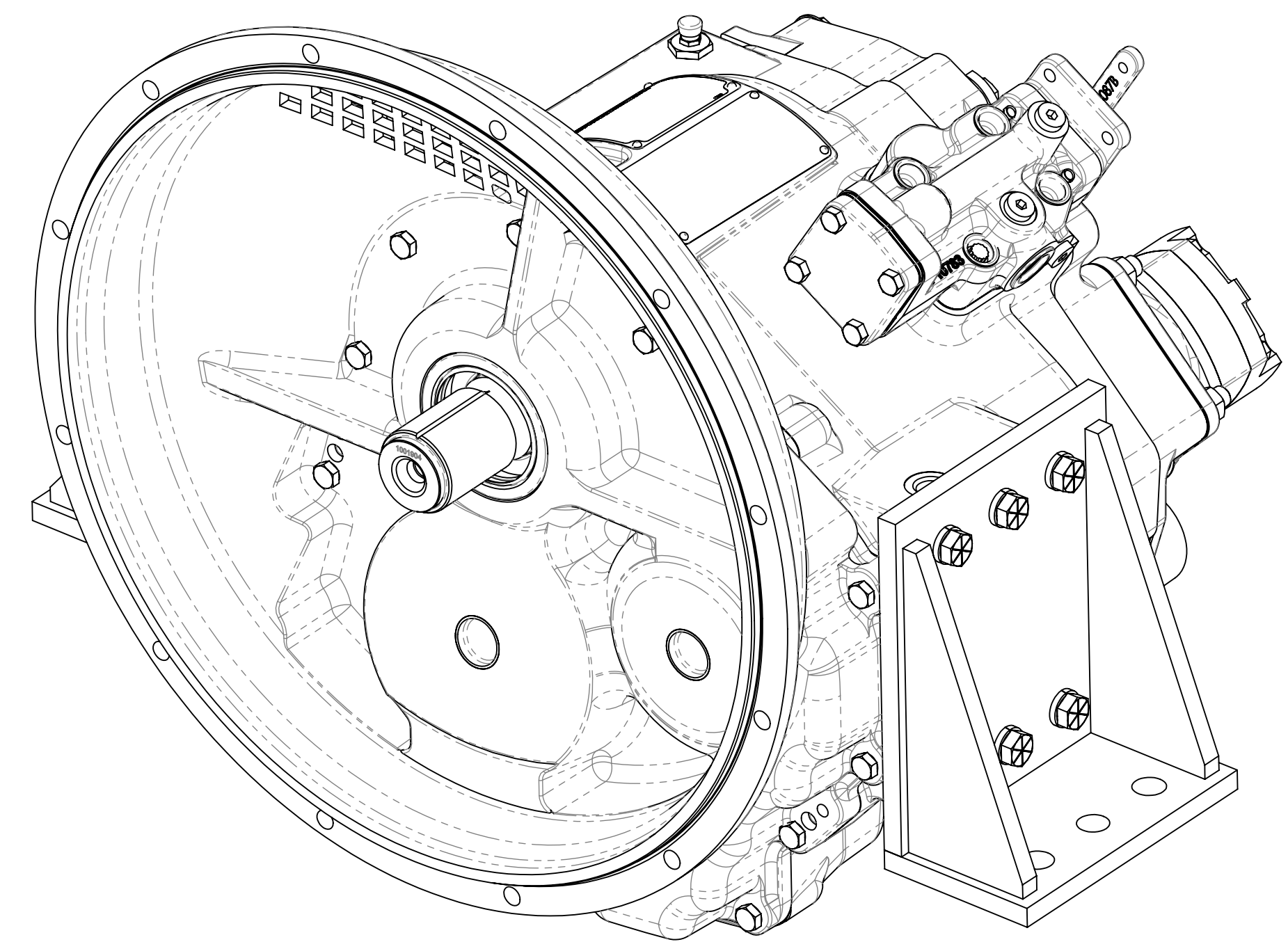
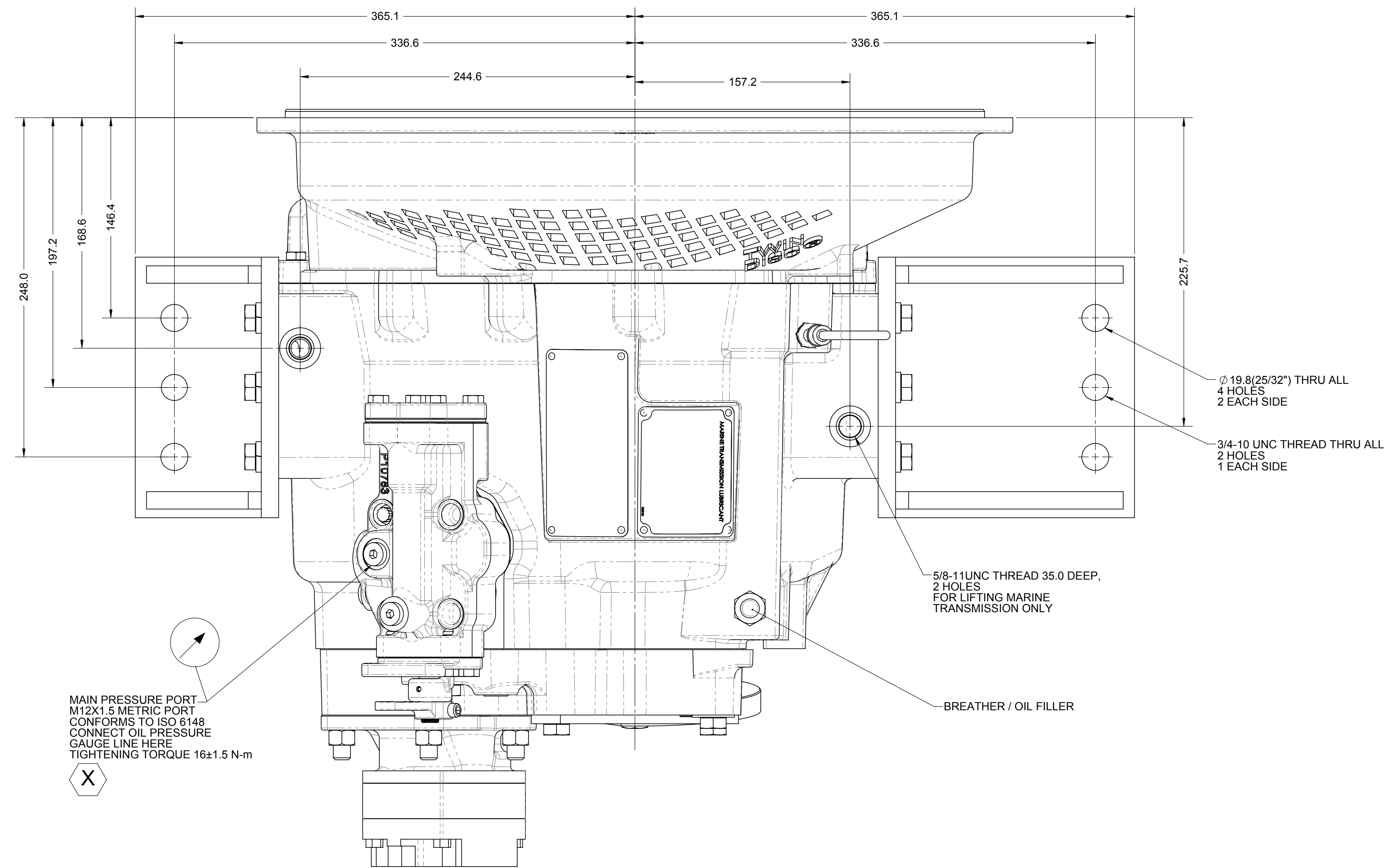
- 1 INPUT GROUP REFERENCE PLANE
- 2 PTO GROUP MOUNTING FACE
- 3 LEFT BRACKET MOUNTING FACE
- 4 RIGHT BRACKET MOUNTING FACE

NOTES:
-REFERENCE S930 FOR TWIN DISC REQUIREMENTS FOR
PRESSURE AND TEMPERATURE ALARM LEVELS.

-ALL POINTS AVAILABLE FOR TESTING ARE CODED ✓




SECTION A-A



EQUIPMENT SHOWN:

- MG-5090A PER PX10015 ASSEMBLY
- MECHANICAL CONTROL VALVE LESS MECHANICAL TROLLING VALVE
- SAE #1 HOUSING ADAPTER
- 1016428V MOUNTING BRACKET

FIRST USE ASSEMBLY PX10015		REV		NDWF-75045		05/05/2014	
FIRST USE MODEL MG-5090A		REV		CHANGE NO.		DATE	
SIMILAR TO		WEIGHT: 235.34		 THIRD ANGLE PROJECTION		MATERIAL: HEAT TREAT:	
METRIC NOTES: THIS PART CONTAINS PROPRIETARY INFORMATION AND IS NOT TO BE REPRODUCED OR INCORPORATED IN ANY OTHER DRAWING WITHOUT THE WRITTEN PERMISSION OF TWIN DISC CORPORATION. THIS DRAWING IS THE PROPERTY OF TWIN DISC CORPORATION. IT IS TO BE USED FOR THE MANUFACTURE OF THIS PART ONLY.		UNLESS OTHERWISE SPECIFIED MACHINED DIMENSIONS:		DESCRIPTION: INSTALLATION MG-5090A		DATE: 04/28/2014 SCALE: 1:2 DRAWN BY: PM CHECKED BY: ALB APPROVED BY: ALC	
		ALL DIMENSIONS ARE IN INCHES UNLESS OTHERWISE SPECIFIED. PER ASME Y14.5M 1994		TOLERANCES:		TWIN DISC RACINE, WI 53403 - USA PX13290A A0 SPEC: 1 OF 1	