
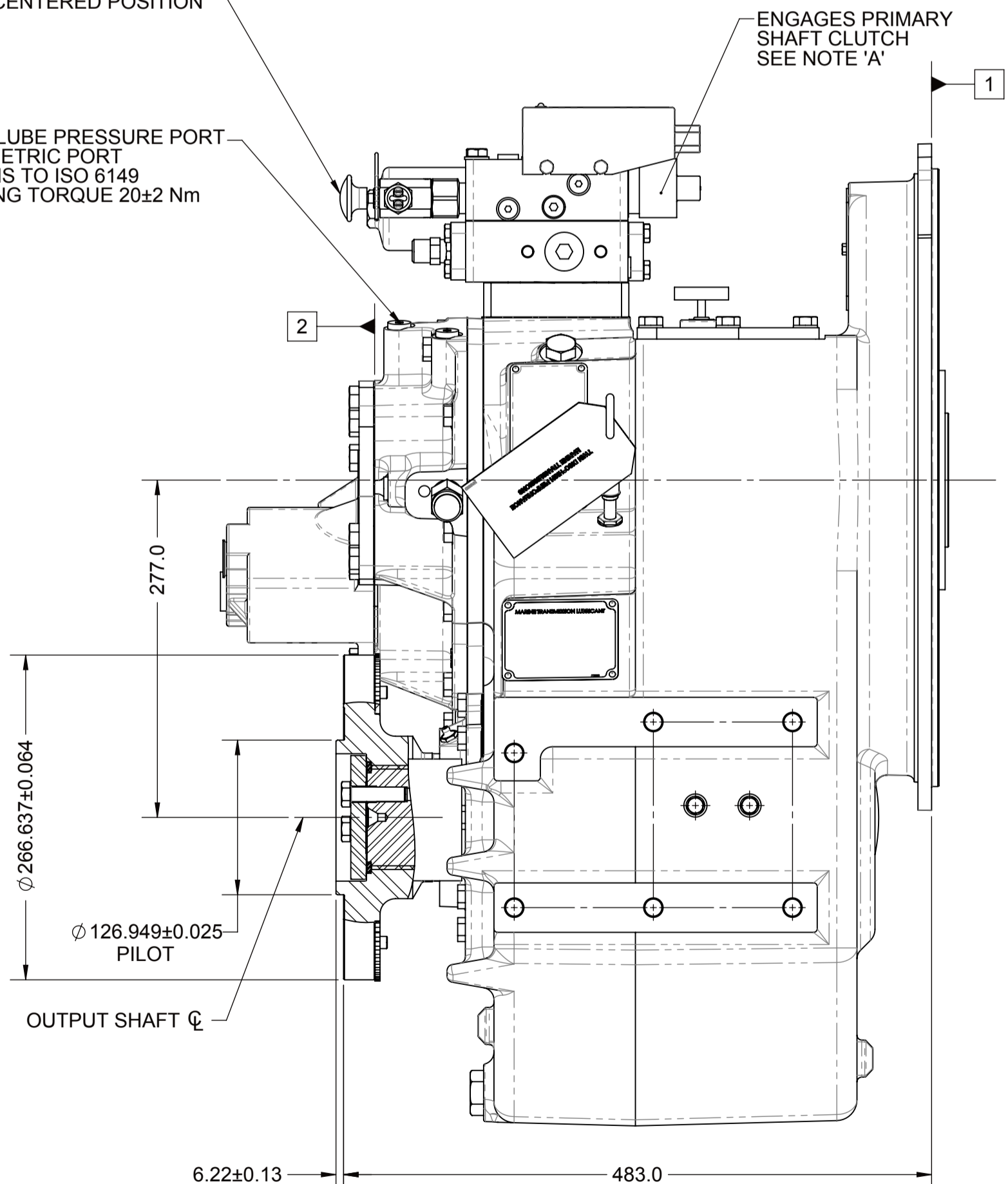
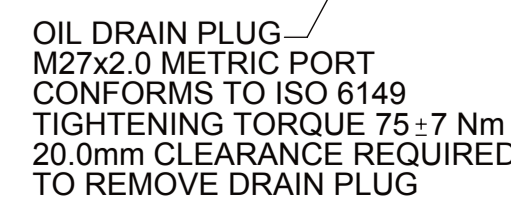
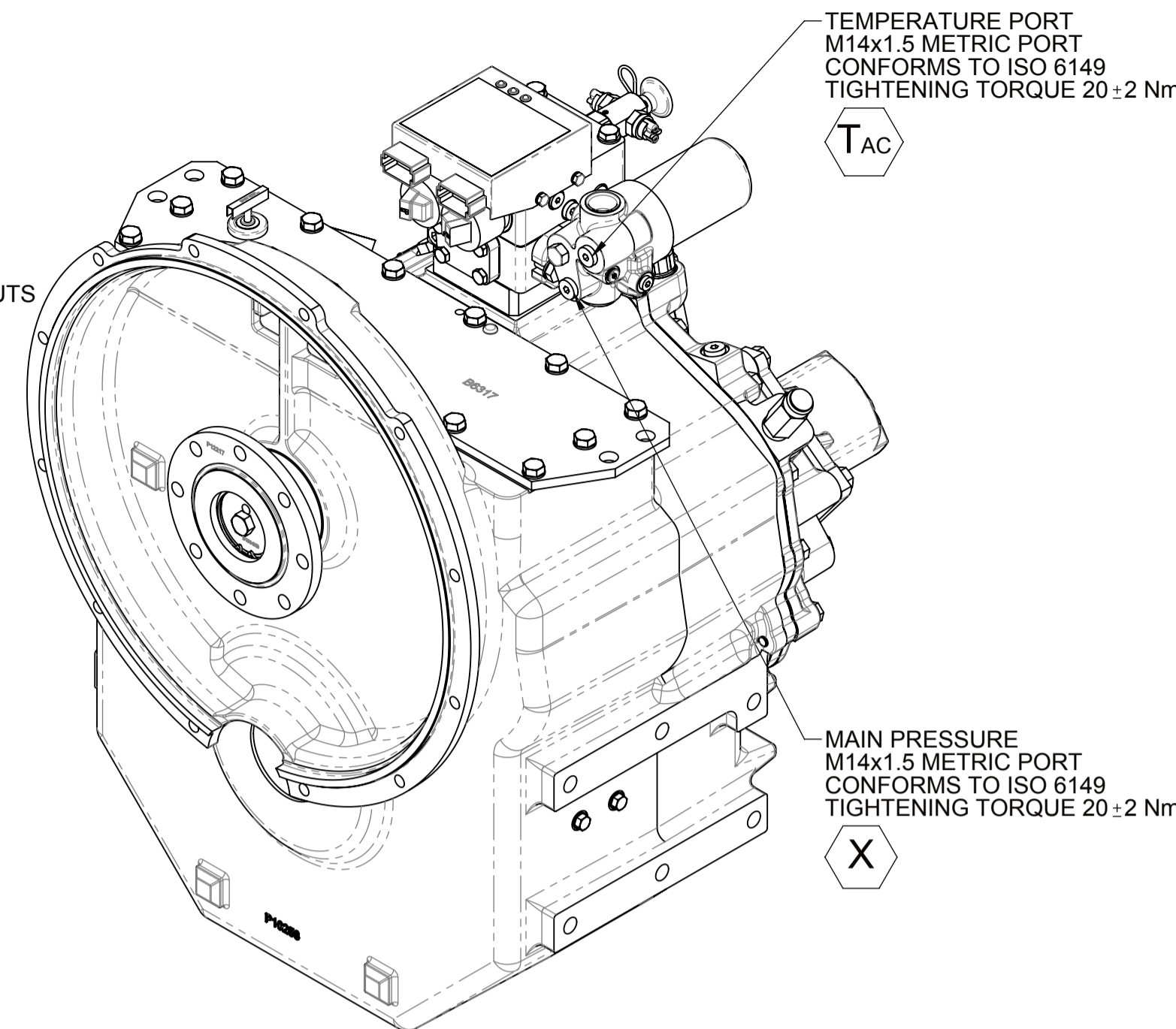



- A. PROPORTIONAL CONTROL VALVE OPERATION
  - 1. WARNING DO NOT CONNECT VALVE COIL DIRECTLY TO BATTERY/POWER SUPPLY VOLTAGE.
  - 2. OPERATION TO BE PERFORMED WITH ONLY TWIN-DISC CONTROL SYSTEM MODULES.
- B. MANUAL DIRECTIONAL CONTROL VALVE OPERATION
  - 1. WITH MANUAL DIRECTIONAL CONTROL VALVE IN CENTERED POSITION, PUSH TO ENGAGE PRIMARY CLUTCH.
  - 2. WITH MANUAL DIRECTIONAL CONTROL VALVE IN CENTERED POSITION, PULL TO ENGAGE SECONDARY CLUTCH.
- C. MANUAL DIRECTIONAL CONTROL VALVE MODE SWITCH
  - 1. SWITCH IS NORMALLY CLOSED WHEN MANUAL DIRECTIONAL CONTROL VALVE IS IN THE CENTERED POSITION AND OPEN WHEN LEVER IS ACTUATED FROM CENTERED POSITION.
  - 2. CURRENT = 20 AMPS MAX.
  - 3. FOR WIRING SCHEMATIC, REFER TO CONTROL MODULE DRAWING.
- D. UNLESS OTHERWISE SPECIFIED FASTENER TORQUE VALUES AS PER S574 STANDARD
- E. REFERENCE S930 FOR TWIN DISC REQUIREMENTS FOR PRESSURE AND TEMPERATURE ALARM LEVELS.
- F. ALL POINTS AVAILABLE FOR TESTING ARE CODED 




FIRST USE ASSEMBLY:	WEIGHT:	382
FIRST USE MODEL:	WR <sup>2</sup> :	kg-m
SIMILAR TO:		
<h1>METRIC</h1> <p>NOTICE! THIS PRINT CONTAINS PROPRIETARY INFORMATION AND IS NOT TO BE USED IN ANY MANNER DETRIMENTAL TO THE INTEREST OF <b>TWIN DISC, INCORPORATED</b></p> <p>THIS NOTICE IS NOT INTENDED TO NULLIFY OR LIMIT RIGHTS GRANTED TO THE U.S. GOVERNMENT OR OTHERS BY CONTRACT.</p>		

g		THIRD AN PROJECT
	UNLESS OTHERWISE SPECIFIED MACHINED DIMENSIONS X.     ±0.75 X.X   ±0.25 X.XX  ±0.13 ALL ANGULAR TOLERANCES ± GEOMETRIC TOLERANCING PER ASME Y14.5M 1994	

SECTION ED :1"	MATERIAL:	
	HEAT TREAT:	
	DESCRIPTION:	INSTALLATION MGX-5114DC

DATE:	04/05/2018
SCALE:	1:4
DRAWN BY:	LT
CHECKED BY:	DV
APPROVED BY:	DV

-	NDWF-3000421	04/20/2018
REV	CHANGE NO.	DATE
		
RACINE, WI 53403 - USA		
PX13298G		
DWG SIZE:	A1	SHEET: 1 OF 1
		REV: -