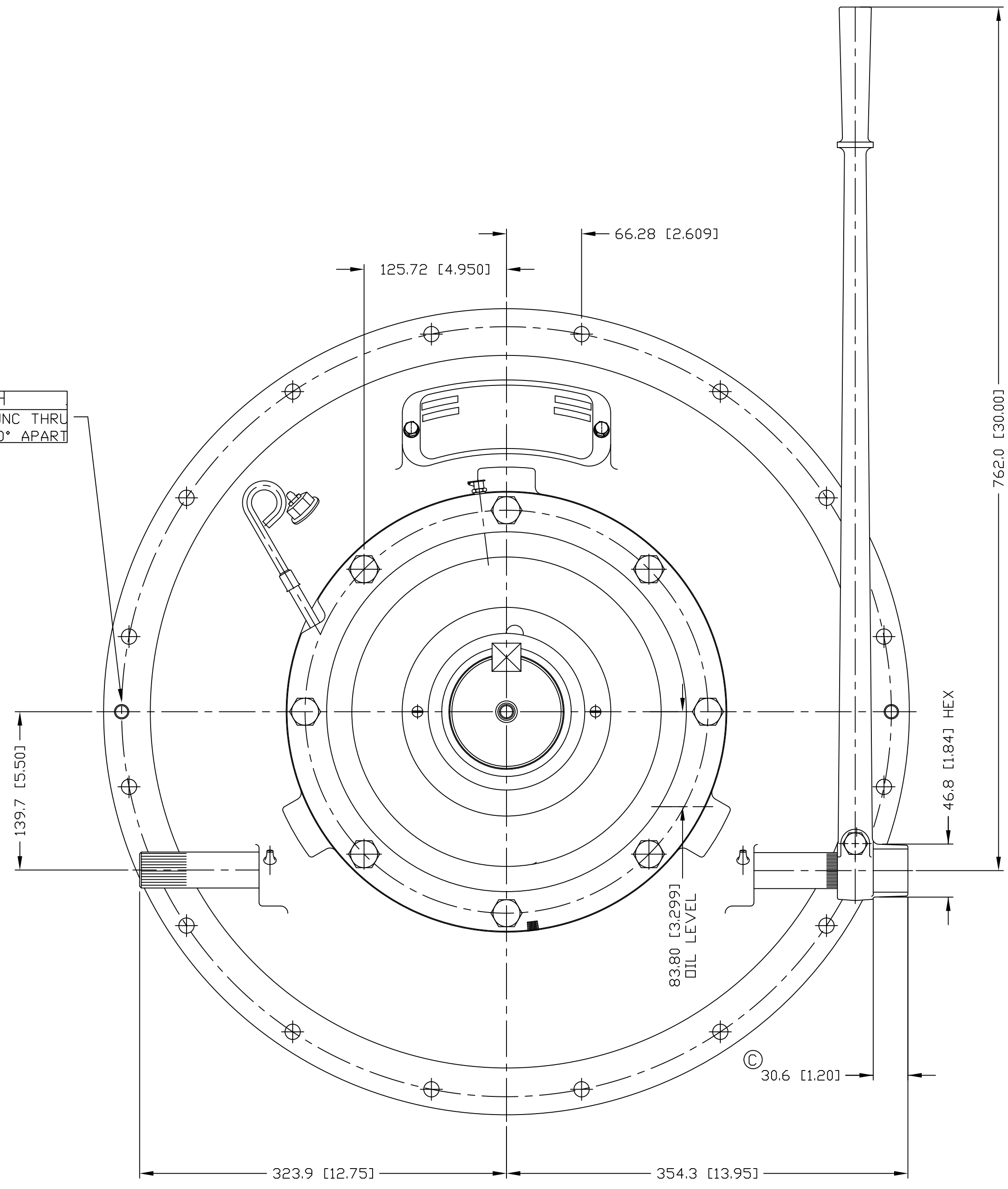
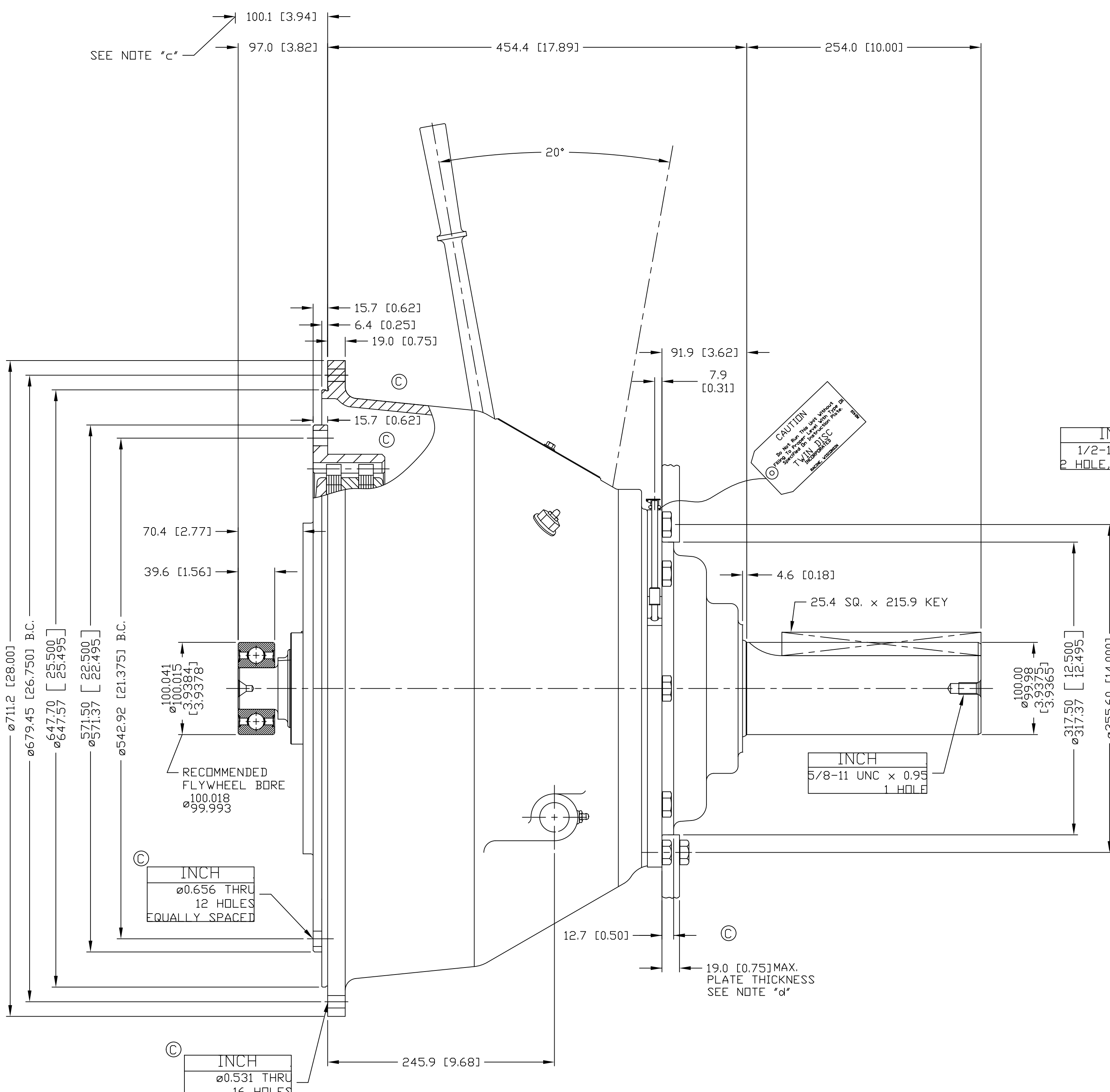


6  
5  
4  
3  
2  
1



SEE NOTE 'c' → 100.1 [3.94]  
97.0 [3.82]

**CAUTION**  
Do Not Use This Unit Unless  
Properly Installed and  
TWIN DISC  
Approved

INCH  
1/2-13 UNC THRU  
2 HOLE, 180° APART

INCH  
5/8-11 UNC x 0.95  
1 HOLE

INCH  
Ø0.656 THRU  
12 HOLES  
EQUALLY SPACED

INCH  
Ø0.531 THRU  
16 HOLES  
EQUALLY SPACED

RECOMMENDED  
FLYWHEEL BORE  
Ø100.018  
Ø99.993

- GENERAL NOTES:**
- a.) REFER TO BOM LIST WHEN ORDERING PARTS.
  - b.) REFER TO CARE & OPERATION MANUAL FOR ADDITIONAL INFO.
  - c.) FACE OF SAE PTO HOUSING TO BOTTOM OF PILOT BORE IN FLYWHEEL.
  - d.) A SUPPORT PLATE MUST BE USED.
  - e.) DIMENSIONS WITHOUT TOLERANCES ARE FOR REFERENCE ONLY.

|   |  |  |      |                           |                      |                                    |                   |  |
|---|--|--|------|---------------------------|----------------------|------------------------------------|-------------------|--|
| UNLESS OTHERWISE SPECIFIED<br>DIMENSIONS ARE IN<br>MILLIMETERS              |  | WEIGHT   | MPN  | FIRST USE                 | MATERIAL             | HEAT TREAT                         | DATE              | <b>TWIN DISC</b><br>INCORPORATED<br>RACINE, WI 53403 - USA |
| X .001<br>XX .002<br>XXX .005   |  | kg   | N. # | ASSY<br>MODEL SP218DP0    | SIMILAR TO<br>XA7190 |                                    | 2/19/96           |  |
| ALL ANGULAR TOLERANCES ±1°<br>GEOMETRIC TOLERANCING<br>PER ASME Y14.5M 1994 |  | NOTICE: THIS PRINT CONTAINS PROPRIETARY INFORMATION AND IS NOT TO BE<br>USED IN ANY MANNER DETRIMENTAL TO THE INTEREST OF<br>TWIN DISC. INCORPORATE<br>THIS NOTICE IS NOT INTENDED TO WAIVE OR LIMIT RIGHTS GRANTED TO<br>THE U.S. GOVERNMENT OR OTHERS BY CONTRACT. |      | THIRD ANGLE<br>PROJECTION |                      | NAME<br>SP218DP0<br>POWER TAKE OFF | SCALE<br>25 = 1   | SP218P002  |
|   |  |  |      |                           |                      | APPD.<br>JMS                       | DWG<br>SIZE<br>A1 |  |
|   |  |  |      |                           |                      |                                    |                   | REV<br>D   |

F E D C B I A