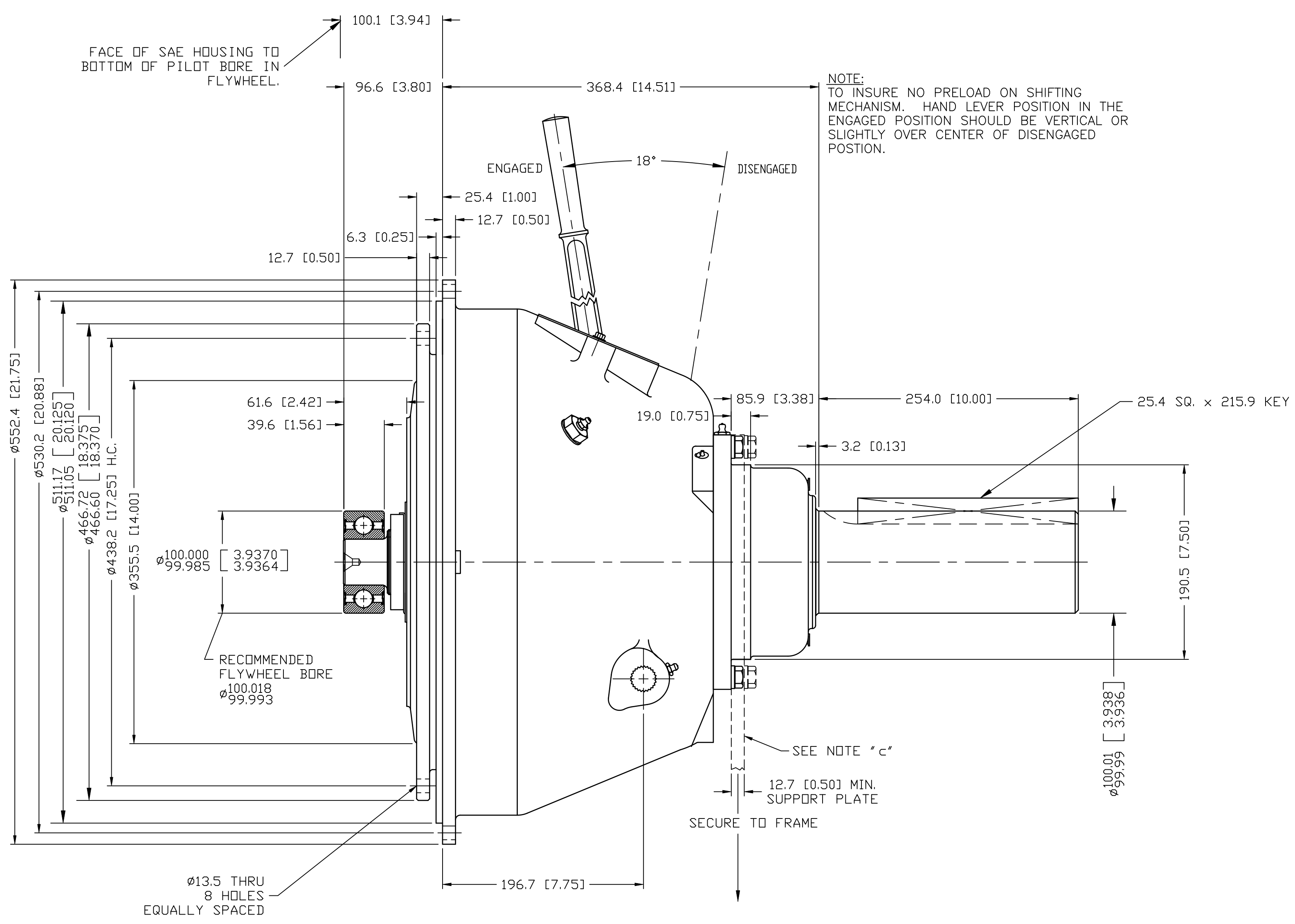
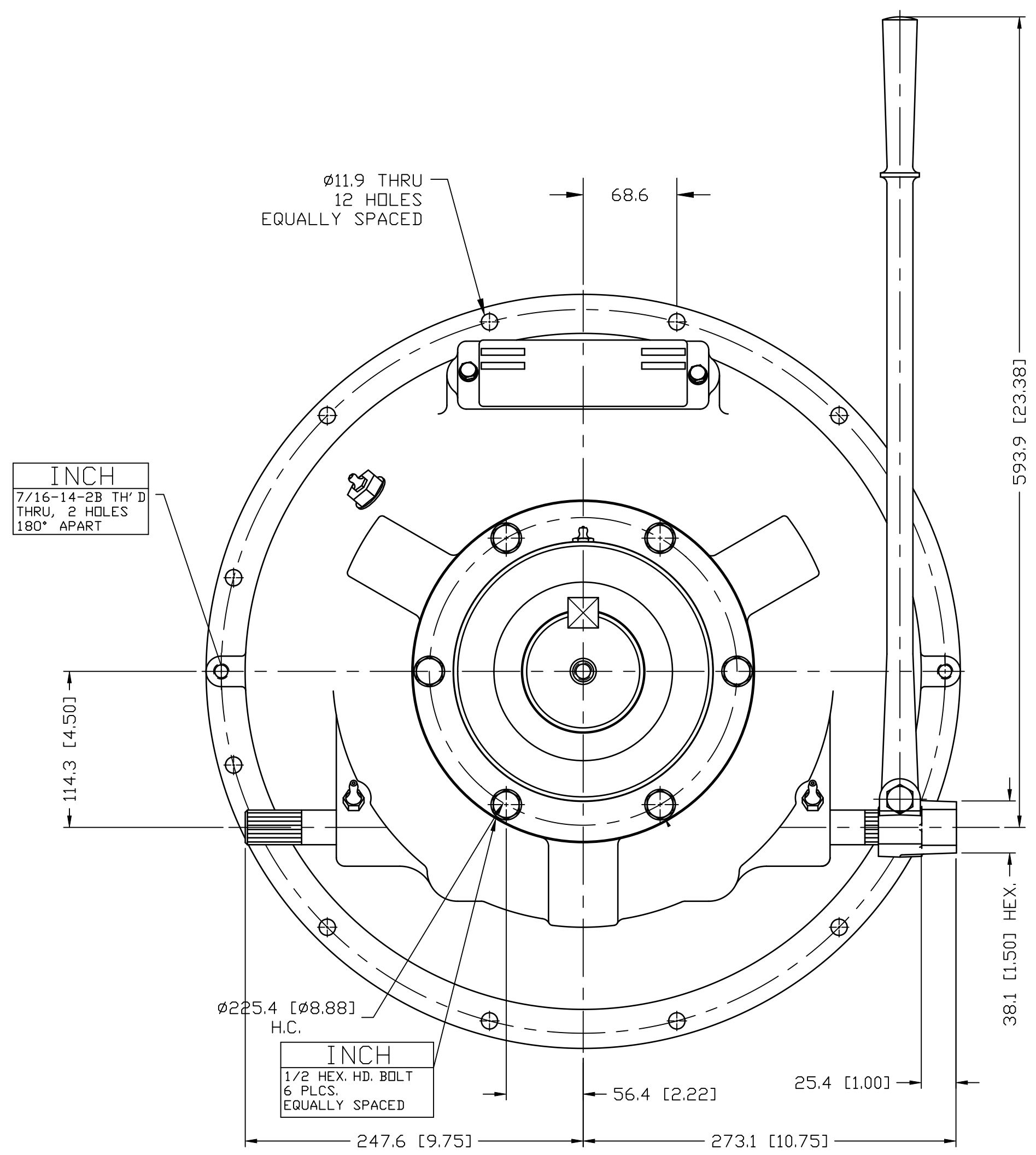


6  
5  
4  
3  
2  
1



NOTE:  
TO INSURE NO PRELOAD ON SHIFTING MECHANISM. HAND LEVER POSITION IN THE ENGAGED POSITION SHOULD BE VERTICAL OR SLIGHTLY OVER CENTER OF DISENGAGED POSITION.



GENERAL NOTES:  
a.) REFER TO BILL OF MATERIALS LIST WHEN ORDERING PARTS.  
b.) REFER TO CARE & OP. MANUAL FOR ADDITIONAL INFO.  
c.) INSTALLER SUPPLIED SUPPORT PLATE MUST BE USED.

© OBSOLETE FOR PRODUCTION. REPLACED BY PX1039956B FOR SERVICE PER ECNWF-101274

UNLESS OTHERWISE SPECIFIED DIMENSIONS ARE IN MILLIMETERS MACHINED DIMENSIONS X ±0.75 XX ±0.25 XXX ±0.13 ALL ANGULAR TOLERANCES ±1° GEOMETRIC TOLERANCING PER ASME Y14.5M 1994	WEIGHT	kg	1.0	FIRST USE	SP314P109	MATERIAL	HEAT TREAT	DATE	06-13-03	TWIN DISC INCORPORATED RACINE, WI 53403 - USA				
	ASSY.	SP314P109	MODEL	SP314P1	SCALE			.38 = 1	DRAWN		DJH			
NOTICE: THIS PRINT CONTAINS PROPRIETARY INFORMATION AND IS NOT TO BE USED IN ANY MANNER DETRIMENTAL TO THE INTEREST OF TWIN DISC. INCORPORATE THIS NOTICE IN ANY PURCHASE ORDER OR CONTRACT.								CHKD	JTS	SP314P109				
THIRD ANGLE PROJECTION								APPRD.	JTS	POWER TAKE-OFF	DWG SIZE	A1	SHT. 2 OF 2	REV C

F E D C B A