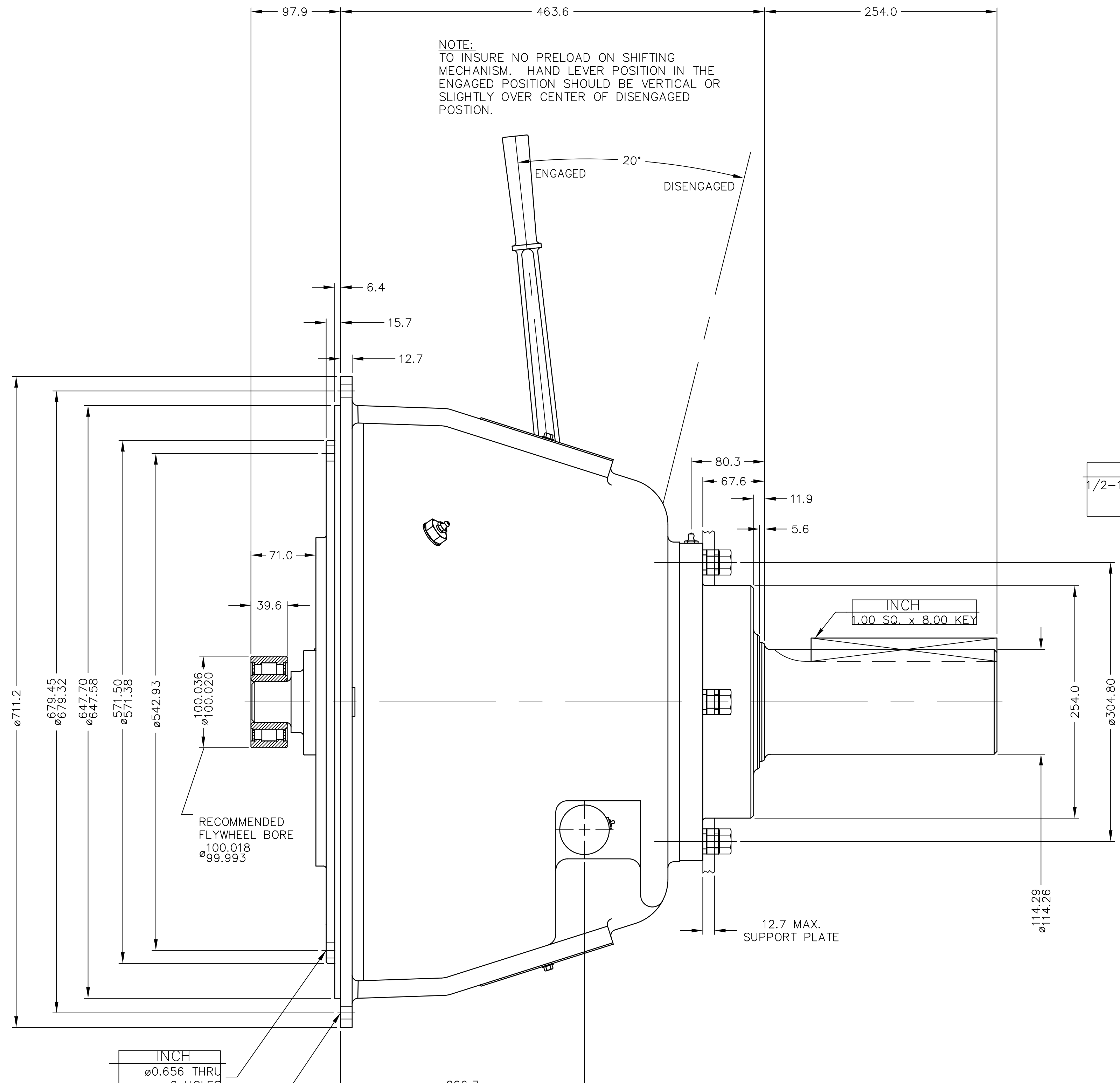
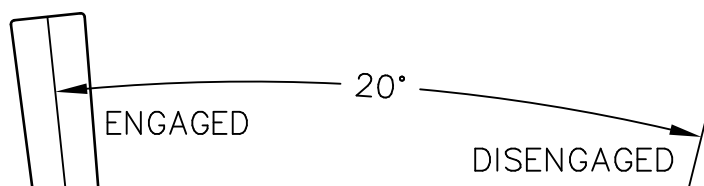
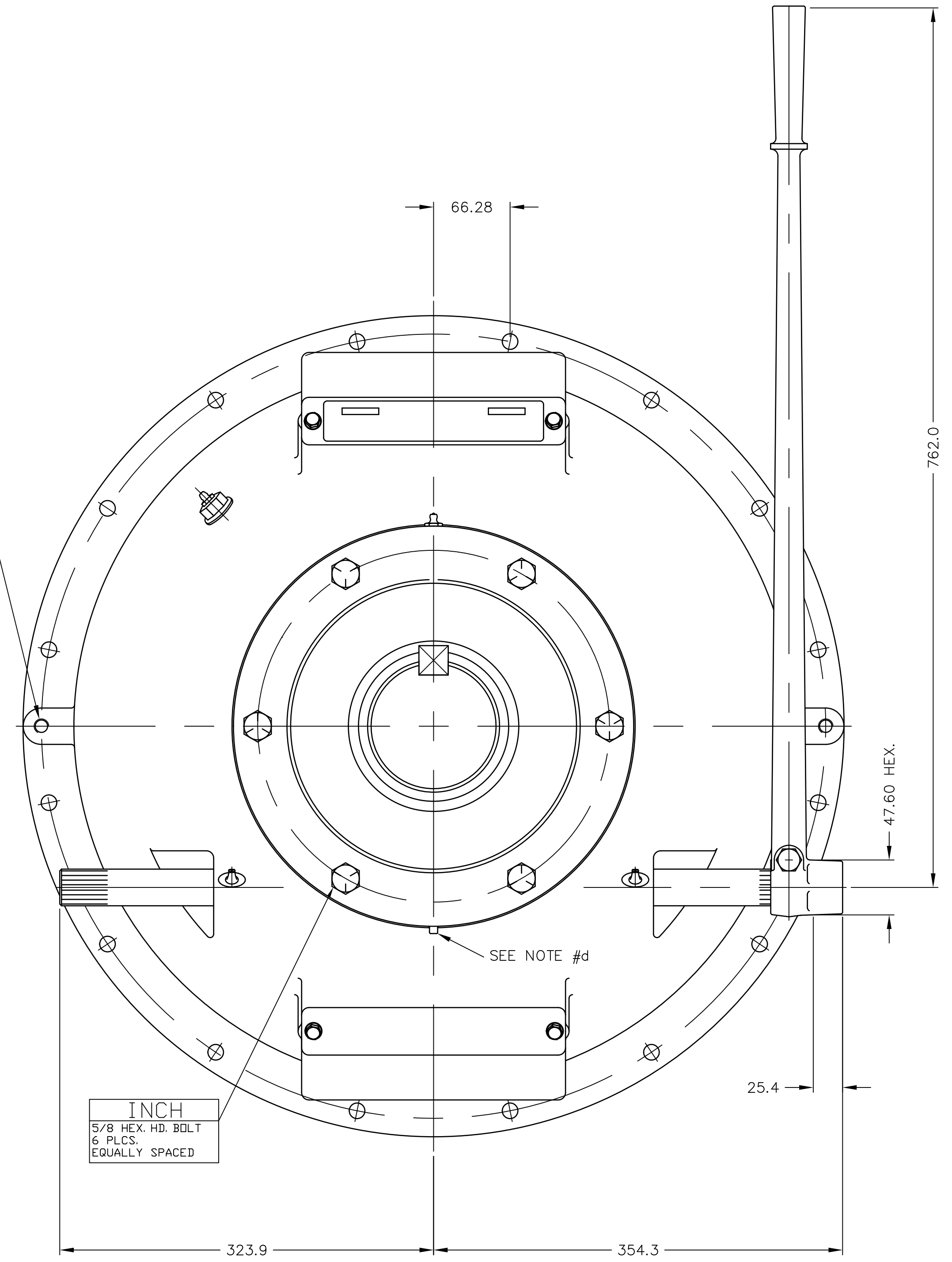


NOTE:  
TO INSURE NO PRELOAD ON SHIFTING MECHANISM. HAND LEVER POSITION IN THE ENGAGED POSITION SHOULD BE VERTICAL OR SLIGHTLY OVER CENTER OF DISENGAGED POSITION.



GENERAL NOTES:

- a.) REFER TO BILL OF MATERIALS LIST WHEN ORDERING PARTS.
- b.) REFER TO CARE & OP. MANUAL FOR ADDITIONAL INFO..
- c.) INSTALLER SUPPLIED SUPPORT PLATE MUST BE USED.
- d.) REMOVE PIPE PLUG UNDERNEATH WHEN GREASING MAIN BEARING. BEST REMOVAL OF OLD GREASE WILL BE OBTAINED WITH SHAFT TURNING. AFTER CLEAN GREASE APPEARS AT OUTLET, RUN UNIT ONE HALF HOUR UNTILL EXCESS GREASE DRAINS OUT. RE-INSTALL PLUG (BEARINGS RUN HOT IF TOO MUCH GREASE IS USED).



SEPARATED FROM DRAWING SP318P001-2

DATE 08-14-08	<b>TWIN DISC</b> INCORPORATED RACINE, WI 53403 - USA
SCALE .38 = 1	
DRN: DJH	<b>SP318P004</b>
CHK: ZP	
APPD: SAG	DWG A1
	SHT. 2 OF 2
	REV B

UNLESS OTHERWISE SPECIFIED DIMENSIONS ARE mm MACHINED DIMENSIONS ±0.25 X ±0.75 X.X ±0.25 X.XX ±0.13 X.XXX ±0.13 GEOMETRIC TOLERANCING PER ASME Y14.5M 1994	WEIGHT kg	WR <sup>2</sup> N.m <sup>2</sup>	FIRST USE ASSY. SP318P004 MODEL SP318P0	<b>METRIC</b>	MATERIAL SIMILAR TO	HEAT TREAT
NOTICE: THIS PRINT CONTAINS PROPRIETARY INFORMATION AND IS NOT TO BE USED IN ANY MANNER DETRIMENTAL TO THE INTEREST OF TWIN DISC, INCORPORATED. THIS NOTICE IS NOT INTENDED TO NULLIFY OR LIMIT RIGHTS GRANTED TO THE U.S. GOVERNMENT OR OTHERS BY CONTRACT.				THIRD ANGLE PROJECTION		