

MG-5061 Series

**MAXIMUM 345 KW (463 HP)
@ 2800 RPM (PLEASURE CRAFT)**

STANDARD EQUIPMENT

MG-5061SC

- Vertical offset, cast iron housing
- Mechanical control valve
- Oil strainer

MG-5061A

- Vertical offset, cast iron housing
- 7° down angle on output shaft
- Mechanical control valve
- Oil strainer

MG-5061RV

- Remote V-drive, cast iron housing
- 7° down angle on output shaft
- Input flange
- Mechanical control valve
- Oil strainer



INPUT RATINGS – KILOWATTS (HORSEPOWER)*

For service classification definitions and important notes, refer to twindisc.com, the Twin Disc Marine Product Guide or contact Twin Disc directly.

MG-5061SC	Reduction Ratios :1	Pleasure Craft @ 2800 rpm	Light Duty @ 2800 rpm	Intermediate Duty @ 2500 rpm	Medium Duty @ 2100 rpm	Continuous Duty @ 2100 rpm
	1.15, 1.48 1.77, 2.00	345 kW (463 hp)	323 kW (433 hp)	239 kW (320 hp)	157 kW (211 hp)	142 kW (190 hp)
	2.43	321 kW (430 hp)	300 kW (402 hp)		147 kW (197 hp)	133 kW (178 hp)
	3.00	298 kW (400 hp)	279 kW (374 hp)			

MG-5061A/MG-5061RV	Reduction Ratios :1	Pleasure Craft @ 2800 rpm	Light Duty @ 2800 rpm	Intermediate Duty @ 2500 rpm	Medium Duty @ 2100 rpm	Continuous Duty @ 2100 rpm
	1.13, 1.28 1.54, 1.75	345 kW (463 hp)	313 kW (420 hp)	239 kW (320 hp)	157 kW (211 hp)	142 kW (190 hp)
	2.00		300 kW (402 hp)			
	2.47	321 kW (430 hp)		147 kW (197 hp)	133 kW (178 hp)	

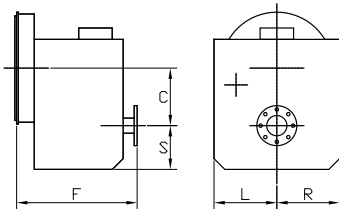
* Ratings shown for use with standard right-hand rotation engines. The maximum allowable rated engine speed is 2500 rpm.



OPTIONS

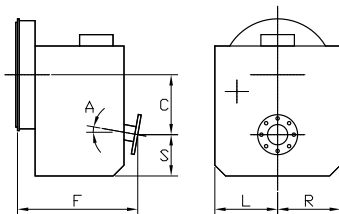
	MG-5061SC	MG-5061A	MG-5061RV
SAE J617 #2 to SAE J617 #1 housing adaptor	X	X	
SAE J617 housing #2, #3 and #4	X	X	
Borg Warner housing	X	X	
Flexible coupling for 14" flywheel (SAE J620 size 355)	X	X	
Flexible coupling for 11.5" flywheel (SAE J620 size 290)	X	X	
Flexible coupling for 10" flywheel (SAE J620 size 255)	X	X	
Input flange for freestanding installation	X	X	Standard
High speed configuration (3300-5500 rpm)	X	X	X
Electric control valve (12 VDC or 24 VDC)	X	X	X
Mechanical trolling valve	X	X	X
Oil cooler	X	X	X
Companion flange/bolt set	X	X	X
Monitoring devices to customer's specification	X	X	X
Mounting brackets	X	X	X
Live PTO			
SAE J744 size 82-2, 16-4 (SAE "A", 2-bolt) - max. 35 Nm	X	X	X
SAE J474 size 101-2/4, 22-4 (SAE "B", 2/4-bolt) - max. 197 Nm	X	X	X
Dry weight including SAE #3 housing and SAE 290 flexible coupling	103 kg	99 kg	89 kg

MG-5061SC



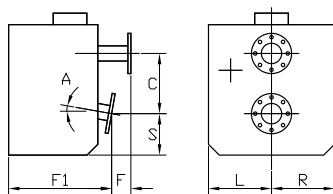
C	144 mm (5.66")
S	123 mm (4.84")
F	335 mm (13.18")
L	213 mm (8.40")
R	156 mm (6.15")

MG-5061A



C	146 mm (5.75")
S	107 mm (4.21")
F	318 mm (12.53")
L	213 mm (8.40")
R	156 mm (6.16")
A	7°

MG-5061RV



C	146 mm (5.75")
S	107 mm (4.21")
F	71 mm (2.79")
F1	267 mm (10.53")
L	213 mm (8.40")
R	156 mm (6.16")
A	7°

Twin Disc, Incorporated reminds users of these products that their safe operation depends on use in compliance with engineering information provided in our catalog. Users are also reminded that safe operation depends on proper installation, operation and routine maintenance and inspection under prevailing conditions. It is the responsibility of users (and not Twin Disc, Incorporated) to provide and install guards or safety devices which may be required by recognized safety standards or by the Occupational Safety and Health Act of 1970 and its subsequent provisions.

USA • Australia • Belgium • Canada • China • India • Italy • Netherlands • Singapore • Switzerland

Since 1918, we've been putting horsepower to work by designing, engineering and manufacturing rugged-duty industrial products. Our products and our reputation are bolted to the most renowned engine manufacturers and equipment OEMs in the world. Our mission is to make boats, machines and off-highway vehicles more productive, more durable, more operator-friendly, and more cost-effective. From design and installation consultation through after-sale support, Twin Disc and its distributors are committed to your business. No one knows more about managing horsepower in more ways than Twin Disc.

TRANSMISSIONS

ELECTRONIC CONTROLS

EXPRESS JOYSTICK SYSTEM®

SAILDRIVES

EXPRESS POSITIONING®

ARNESON® SURFACE DRIVES

MARINE CONTROL DRIVES

ROLLA™ PROPELLERS

THRUSTERS

VETH PROPULSION SYSTEMS

STEERING SYSTEMS

RUDDERS

TRIM TABS

BLUEDRIVES

PUMP DRIVES

PTOS



Twin Disc, Incorporated
 Racine, Wisconsin 53403 USA
 Phone +1-262-638-4000
 Fax +1-262-638-4482
www.twindisc.com

2002_Bulletin_MG-5061_Series
 © 2020, Twin Disc, Incorporated
 Printed in the USA