

ASD12**ARNESON SURFACE DRIVE**

- Bronze housings
- Lube oil reservoir
- Drive backing plate and mounting kit
- Steering cylinder and mounting kit
- Trim cylinder and mounting kit
- 12 VDC electric trim pump
- Installation manual, owners manual and drive ball wrench (one per ship set)

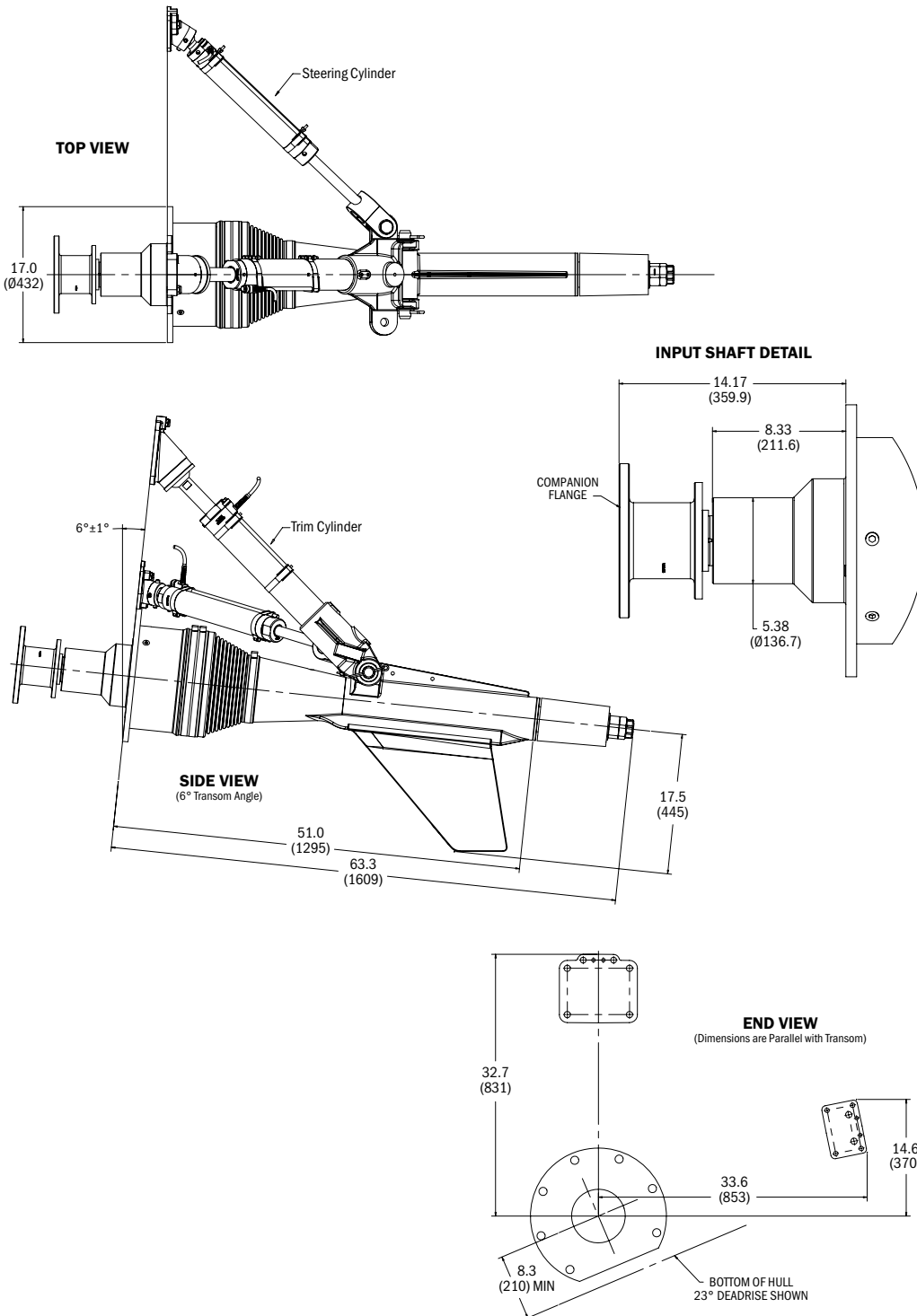
**ACCESSORIES**

- Long fin option
- Anode kit
- Compact lube oil reservoir
- 24 VDC electric trim pump
- Enhanced contactless position sensor for trim and steering cylinders, gauge included
- Hydraulic power steering system
- Driveline (cardan shaft)
- Companion (input) flange
- Tie-bar (mechanical or hydraulic – for multiple engine vessels)
- Inboard steering cylinder mounting kit
- Rolla™ Propellers

TECHNICAL DATA

Reduction Ratio	1.00:1
Maximum Input Torque	4800 ft-lbs
Unit Weight	785 lbs
Overall Length from Transom	63 in
Nominal Shaft Diameter	3.3 in
Steering Angle Degree	40 degrees
Trim Angle Degree	15 degrees

ASD12 IN-LINE SURFACE DRIVE SCHEMATICS



All dimensions shown: in (mm)

Twin Disc, Incorporated reminds users of these products that their safe operation depends on use in compliance with engineering information provided in our catalog. Users are also reminded that safe operation depends on proper installation, operation and routine maintenance and inspection under prevailing conditions. It is the responsibility of users (and not Twin Disc, Incorporated) to provide and install guards or safety devices which may be required by recognized safety standards or by the Occupational Safety and Health Act of 1970 and its subsequent provisions.

Since 1918, we've been putting horsepower to work by designing, engineering and manufacturing rugged-duty industrial products. Our products and our reputation are bolted to the most renowned engine manufacturers and equipment OEMs in the world. Our mission is to make boats, machines and off-highway vehicles more productive, more durable, more operator-friendly, and more cost-effective. From design and installation consultation through after-sale support, Twin Disc and its distributors are committed to your business. No one knows more about managing horsepower in more ways than Twin Disc.

TRANSMISSIONS

ELECTRONIC CONTROLS

EXPRESS JOYSTICK SYSTEM®

SAILDRIVES

EXPRESS POSITIONING®

ARNESON® SURFACE DRIVES

MARINE CONTROL DRIVES

ROLLA™ PROPELLERS

THRUSTERS

VETH PROPULSION SYSTEMS

STEERING SYSTEMS

RUDDERS

TRIM TABS

BLUEDRIVES

PUMP DRIVES

PTOS



Twin Disc, Incorporated
Racine, Wisconsin 53403 USA

Phone +1-262-638-4000

Fax +1-262-638-4482

www.twindisc.com

2008_Bulletin_ASD12

© 2020, Twin Disc, Incorporated

Printed in the USA