

MGX-5146 SERIES

**MAXIMUM 1142 KW (1531 HP)
@ 2300 RPM (PLEASURE CRAFT)**

STANDARD EQUIPMENT

MGX-5146SC/MGX-5146A/MGX-5146RV

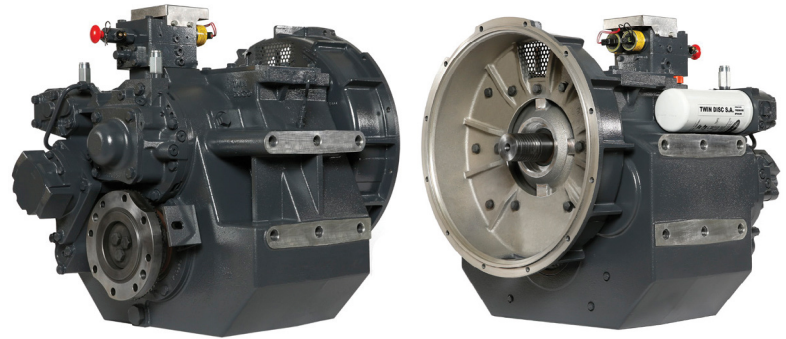
- Vertical offset, aluminum housing
- Electric GP-valve with manual override
- EC600PC profile module – interface for engagement signals
- Oil strainer and oil filter

MGX-5146A

- 10° down angle on output shaft

MGX-5146RV

- 10° down angle on output shaft
- Input flange GWB 587.50



QUICKSHIFT®
BY TWIN DISC

INPUT RATINGS

Reduction Ratios :1		Pleasure Craft @ 2300 RPM	Light Duty @ 2300 RPM	Intermediate Duty @ 2100 RPM	Medium Duty @ 1800 RPM	Continuous Duty @ 1800 RPM
MGX-5146SC	1.03, 1.20, 1.33, 1.48, 1.57, 1.75, 1.96	1142 kW (1531 hp)	974 kW (1306 hp)	806 kW (1081 hp)	671 kW (900 hp)	612 kW (821 hp)
	2.50	952 kW (1277 hp)	895 kW (1200 hp)	702 kW (941 hp)	552 kW (740 hp)	537 kW (720 hp)
MGX-5146A/ MGX-5146RV	1.26, 1.48, 1.75, 1.96	1142 kW (1531 hp)	974 kW (1306 hp)	806 kW (1081 hp)	671 kW (900 hp)	612 kW (821 hp)
	2.50	1014 kW (1360 hp)	895 kW (1200 hp)	702 kW (941 hp)	552 kW (740 hp)	537 kW (720 hp)

For service classification definitions and important notes refer to the Twin Disc Marine Product Guide or contact Twin Disc directly.
Ratings shown for use with standard right hand rotation engines. The maximum allowable rated engine speed is 2500 rpm.

EC600PC ELECTRONIC PROPULSION CONTROL SYSTEM

- Optional equipment: display and joystick



OPTIONAL EQUIPMENT

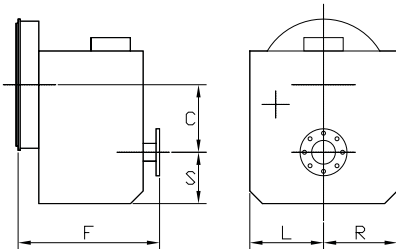
MGX-5146SC/MGX-5146A/MGX-5146RV

- Mechanical control valve
- EC600PC e-troll module and propulsion control system
- Oil cooler with thermostatic bypass valve
- Companion flange/bolts set
- Monitoring devices to customer's specification
- Mounting brackets
- Live PTO: SAE J744 size 127-4, 32-4 (SAE "C", 4-bolt) – max. 592 Nm
- Hydraulic clutchable PTO: SAE J744 size 127-4, 32-4 (SAE "C", 4-bolt) – max. 641 Nm

MGX-5146SC/MGX-5146A ONLY

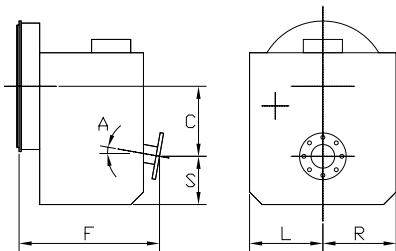
- SAE J617 housing no. 1
- SAE J617 housing no. 0
- Flexible coupling for 14" flywheel (SAE J620 size 355)
- Flexible coupling for 18" flywheel (SAE J620 size 460)
- Input flange size GWB 587.50 for freestanding installation (*standard on MGX-5146RV*)
- Live PTO:
 - SAE J744 size 82-2, 16-4 (SAE "A", 2-bolt) – max. 58 Nm
 - SAE J744 size 101-2, 22-4 (SAE "B", 2-bolt) – max. 197 Nm
 - SAE J744 size 101-2, 25-4 (SAE "B-B", 2-bolt) – max. 337 Nm

MGX-5146SC



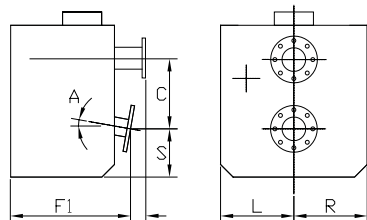
C	206 mm (8.12")
S	179 mm (7.04")
F	572 mm (22.52")
L	305 mm (12.01")
R	305 mm (12.01")
Weight*	344 kg

MGX-5146A



C	264 mm (10.40")
S	156 mm (6.13")
F	555 mm (21.85")
L	305 mm (12.01")
R	305 mm (12.01")
A	10°
Weight*	354 kg

MGX-5146RV



C	264 mm (10.40")
S	156 mm (6.13")
F	144 mm (5.68")
F1	456 mm (17.96")
L	305 mm (12.01")
R	305 mm (12.01")
A	10°
Weight*	318 kg

*Dry weight including SAE no. 1 housing and SAE 355 flexible coupling

Twin Disc, Incorporated reminds users of these products that their safe operation depends on use in compliance with engineering information provided in our product guides, installation/assembly drawings and/or manuals. Users are also reminded that safe operation depends on proper installation, operation and routine maintenance and inspection under prevailing conditions. It is the responsibility of users (and not Twin Disc, Incorporated) to provide and install guards or safety devices which may be required by recognized safety standards or by the Occupational Safety and Health Act of 1970 and its subsequent provisions.

Since 1918, we've been putting horsepower to work by designing, engineering and manufacturing rugged-duty industrial products. Our products and our reputation are bolted to the most renowned engine manufacturers and equipment OEMs in the world. Our mission is to make boats, machines and off-highway vehicles more productive, more durable, more operator-friendly, and more cost-effective. From design and installation consultation through after-sale support, Twin Disc and its distributors are committed to your business. No one knows more about managing horsepower in more ways than Twin Disc.

TRANSMISSIONS

ELECTRONIC CONTROLS

EXPRESS JOYSTICK SYSTEM®

SAILDRIVES

EXPRESS POSITIONING®

ARNESON® SURFACE DRIVES

MARINE CONTROL DRIVES

ROLLA™ PROPELLERS

VETH PROPULSION SYSTEMS

PUMP DRIVES

PTOS