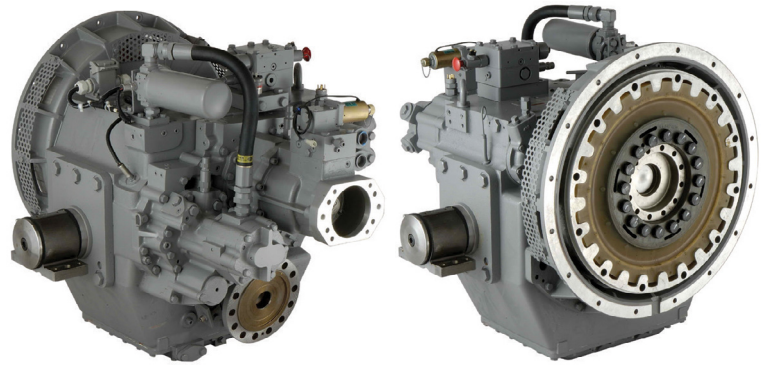


MGX-6620 Series

MGX-6620SC/MGX-6620A/MGX-6620RV

Maximum 1,566 kW (2,100 hp)
@ 2300 rpm (Pleasure Craft)



STANDARD EQUIPMENT

- Electric GP-valve with manual override
- EC600PC profile module - interface for engagement signals
- Integral oil cooler for raw water cooling
- Oil strainer and oil filter
- Vertical offset, aluminum housing (MGX-6620SC/MGX-6620A only)
- 10° down angle on output shaft (MGX-6620A/MGX-6620RV only)
- Remote V-drive, aluminum housing (MGX-6620RV only)
- Input flange GWB 587.50 (MGX-6620RV only)



INPUT RATINGS

Reduction Ratios :1		Pleasure Craft @ 2300 RPM	Light Duty @ 2300 RPM	Intermediate Duty @ 2100 RPM	Medium Duty @ 1800 RPM	Continuous Duty @ 1800 RPM	
MGX-6620SC	1.15	1566 kW (2100 hp)	1338 kW (1794 hp)	1166 kW (1564 hp)	960 kW (1287 hp)	898 kW (1204 hp)	
	1.33, 1.53, 1.73		1417 kW (1900 hp)	1142 kW (1531 hp)	935 kW (1254 hp)	879 kW (1179 hp)	
	2.03			1136 kW (1523 hp)		874 kW (1172 hp)	
	2.32			1100 kW (1475 hp)	906 kW (1215 hp)	847 kW (1136 hp)	
	2.44			1338 kW (1794 hp)	1019 kW (1366 hp)	839 kW (1125 hp)	785 kW (1053 hp)
	2.72				1470 kW (1971 hp)	1021 kW (1369 hp)	950 kW (1274 hp)
MGX-6620RA MGX-6620RV	1.55, 1.72, 2.09	1566 kW (2100 hp)	1417 kW (1900 hp)	1234 kW (1655 hp)	1021 kW (1369 hp)	950 kW (1274 hp)	
	2.28, 2.42		1330 kW (1784 hp)	1145 kW (1535 hp)	943 kW (1265 hp)	833 kW (1117 hp)	
	2.73	1504 kW (2017 hp)		1014 kW (1360 hp)	835 kW (1120 hp)	780 kW (1046 hp)	

For service classification definitions and important notes refer to the Twin Disc Marine Product Guide or contact Twin Disc directly.
Ratings shown for use with standard right hand rotation engines. The maximum allowable rated engine speed is 2500 rpm.

EC600PC ELECTRONIC PROPULSION CONTROL SYSTEM

- Optional equipment: display and joystick

[LEARN MORE AT TWINDISC.COM](http://www.twindisc.com)



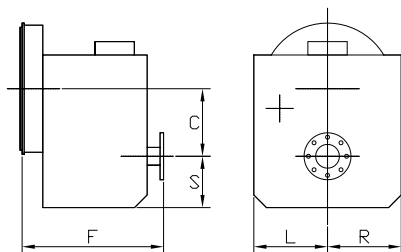
OPTIONAL EQUIPMENT

- EC600PC e-troll module and propulsion control system
- Output shaft-driven trailing pump
- Companion flange/bolts set
- Monitoring devices to customer's specification
- Mounting brackets
- Live PTO:
 - SAE J744 size 101-2, 25-4 (SAE "B-B", 2-bolt) – max. 337 Nm
 - SAE J744 size 127-4, 32-4 (SAE "C", 4-bolt) – max. 600 Nm
- Hydraulic clutchable PTO: SAE J744 size 127-4, 32-4 (SAE "C", 4-bolt) – max. 600 Nm
- Secondary live PTO for power steering pumps:
 - SAE J744 size 101-2, 22-4 (SAE "B", 2-bolt) – max. 75 Nm
 - SAE J744 size 82-2, 16-4 (SAE "A", 2-bolt) – max. 75 Nm

MGX-6620SC/MGX-6620A ONLY

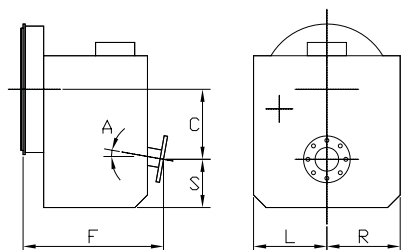
- SAE J617 housing no. 1
- SAE J617 housing no. 0
- Flexible coupling for 14" flywheel (SAE J620 size 355)
- Flexible coupling for 18" flywheel (SAE J620 size 460)
- Input flange for freestanding installation (*standard on MGX-6620RV*)

MGX-6620SC



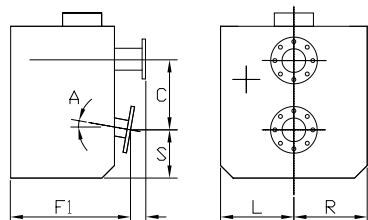
C	235 mm (9.25")
S	235 mm (9.25")
F	698 mm (27.48")
L	340 mm (13.39")
R	340 mm (13.39")
Weight*	575 kg

MGX-6620A



C	316 mm (12.44")
S	184 mm (7.25")
F	653 mm (25.71")
L	340 mm (13.39")
R	340 mm (13.39")
A	10°
Weight*	580 kg

MGX-6620RV



C	316 mm (12.44")
S	184 mm (7.25")
F	129 mm (5.06")
F1	603 mm (23.74")
L	340 mm (13.39")
R	340 mm (13.39")
A	10°
Weight*	520 kg

*Dry weight including SAE no. 0 housing and SAE 460 flexible coupling

USA • AUSTRALIA • BELGIUM • CANADA • CHINA • FINLAND • INDIA
ITALY • NETHERLANDS • NEW ZEALAND • SINGAPORE • SWITZERLAND

Twin Disc, Incorporated reminds users of these products that their safe operation depends on use in compliance with engineering information provided in our catalog. Users are also reminded that safe operation depends on proper installation, operation and routine maintenance and inspection under prevailing conditions. It is the responsibility of users (and not Twin Disc, Incorporated) to provide and install guards or safety devices which may be required by recognized safety standards or by the Occupational Safety and Health Act of 1970 and its subsequent provisions.